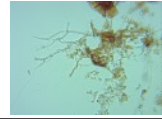


What are Earth Brew for Life Products?

Earth Brew For Life offers the alternative to using harsh chemicals and salt based fertilizers to grow plants.

Our products are living soil amendments to grow healthy plants and

foods through natural means. “Environmental preservation”



Earth Brew products are Teas, Extracts and Biochar. EarthBrew composted **tea** and or **extract** fluid conditioners are intended as a standalone product and are intended to be applied to both soils and plants. These conditioners are produced by mixing or formulating various dry elements naturally found in our environment and then transforming them into a superior fluid product. EarthBrew **Biochar** or **charged charcoal** is a dry, fine granular (powder) product and stands alone in industry with its unique superior group of living beneficial biologicals. Its initial intended use was to be used as a complete seed inoculant, not to be mixed with other ingredient. *Our products significantly improve overall soil and plant health as well as plant productivity (yield). They can suppress weed growth and unwanted insect pest infestations, preserve soil moisture, which reduces risks of soil erosion and contaminant runoff into our environment.*

These products can be directly applied to soils and or plants as a spray or mist. They can also be incorporated into the soil with seed placement as you plant your crop or garden plants. To improve seed germination, seeds can be soaked in a tea or extract conditioner up to 12 hours immediately prior to planting. Please inquire about additional effective ways to apply EarthBrew products. One gallon of Tea/ Extract is intended to **not** cover more than 43,560 sq ft. or one acre. *EarthBrew products will never burn your plants or harm the soil in any way. They are live, living soil amendments (Soil Biologicals) not fertilizers. Therefore once diluted they can literally be applied at any desired additional rates further improving your soils, plant health and all aspects of our environment.*

- Apply to: Ag crops, Lawns, Gardens, Flowers, Trees. Any plant you are growing or to any existing plant or tree to improve health and vigor.
- The object and goal is to reduce crop and plant input costs, increase crop yields, improve soil health, crop quality, conserve water, reduce soil erosion, and all in harmony with nature.

All Earth Brew Products are quality verified by using a microscope to view and inspect the microbial life produced in the teas, extracts or foliar sprays.

- ***Each Earth Brew Product is formulated consistently.***
- ***All Earth Brew Products are environmentally friendly and actually promotes overall environmental health.***

What are Earth Brew for Life Products?

Earth Brew for Life / Earthbrewforlife.com

Jeff Polfer, jpolver@acrec.com 563-568-7258

How will EarthBrew for Life products help me?

- I. *EarthBrew products are engineered to do many things via their specific biological makeup.*
 - a. *They have the potential to significantly increase yields.*
 - b. **Inhibit** the growth or development of **Blights and Mildews**
 - c. *Improve plant fruit health and quality.*
 - d. *Stabilize; loosen compacted soils, significantly improving soil health.*
 - e. *Increase soil water retention, increasing the soils ability to hold up to 80% of its weight in water or moisture.*
 - f. *Promote the release of tied up or built up nutrients in the soil making them available to plants. Thus decreasing nutrient leaching from soils.*
 - g. *EarthBrew extract give your soil the potential to produce much of its own nitrogen.*
 - h. *EarthBrew products promote beneficial DNA regulators thus giving the plant a chance to fight or defend itself within its own environment.*
 - i. *Decreases insect pressure on plants.*
- II. *Who or what will benefit from using EarthBrew for Life products?*
 - a. *EarthBrew products can benefit anyone growing a plant, the plant itself, soils and our entire environment.*
- III. *Where can you use EarthBrew products?*
 - a. *Apply to **All Plants, soils and seeds.***
- IV. *How do you use or apply EarthBrew **Extract, BioChar** and or **Charged Char**?*
 - a. *BioChar is a granular or powder product typically used as a seed inoculant (coating the seed) prior to planting.*
 - b. *Extract is a concentrated liquid that when applied, added water is recommended. Extract can be sprayed onto soils and or foliar sprayed directly on plants. Seeds can be soaked in extract directly prior to planting.*

What are Earth Brew for Life Products?

- c. *Extract liquid rate applied is typically 1 gallon per acre with the exception of trees. Trees have a much larger root ratio so higher volumes are necessary. However, all EarthBrew products are eco friendly and over application will not harm any soils or plants.*

Here is a news flash

EarthBrew for Life Products

Are Affordable and pay for Themselves!